

LM3743 Evaluation Board

National Semiconductor
Application Note 1450
Ricardo Capetillo
September 2006



Introduction

The LM3743 is a voltage mode PWM buck controller which implements synchronous rectification. It provides a low cost, fault tolerant, and efficient point of load solution. To reduce component count several parameters are fixed, such as switching frequency and the short circuit protection level. In steady state operation the LM3743 is always synchronous, even at no load, thus simplifying the compensation design. The LM3743 ensures a smooth and controlled start-up when the output is pre-biased. Two levels of current limit protection enhance the robustness of the power supply and requires no current sense resistor in the power path. The primary level of protection is the low side current limit and is achieved by sensing the voltage V_{DS} across the low side MOSFET. The second level of protection is the high side current limit, which protects power components from extremely high currents, caused by switch node short-circuit to ground.

Specifics Of The Board

The input voltage to the power components (V_{IN}) and the input voltage on the control section (V_{CC}) must be in the range of 3.0V to 5.5V. The 300 kHz demo board design regulates to an output voltage of 1.2V and up to 13A. The 1 MHz demo board design regulates to an output voltage of 1.5V and up to 9A. For additional design modifications refer to the Design Consideration section of the LM3743 data sheet. The PCB is designed on four layers, the top and bottom layers are 2oz. copper and the two inner layers are 1oz. copper. The board measures 2.4 in. x 1.36 in. (6.1 cm x 3.44 cm) and is 62mil (.062") thick on a FR4 laminate.

Additional Footprints

When the tracking feature of the LM3743 is used, remove the soft-start capacitor C4 and use a resistor divider on designators R7 and C4. The ground and Track post have been provided for your connecting convenience.

MOSFET Footprints

The LM3743 demo board accommodates footprints for single N-MOSFETs with standard SO-8 packages and with

exposed drain pads. The MOSFET footprint has the pinout as shown in *Figure 1*. Some examples of MOSFET packages with exposed drain pads are also illustrated.

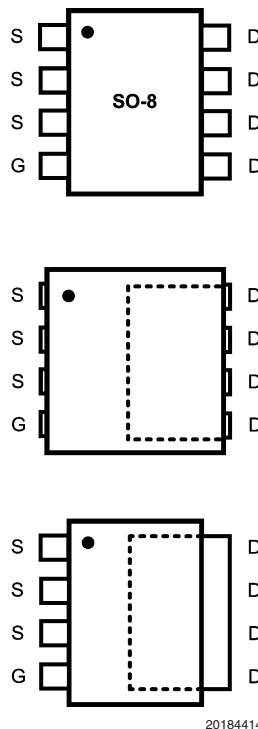
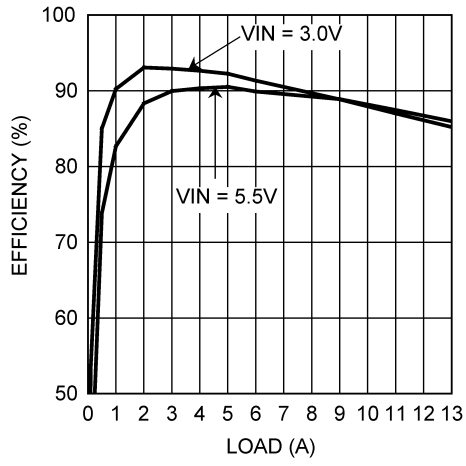


FIGURE 1. SO-8 Footprint

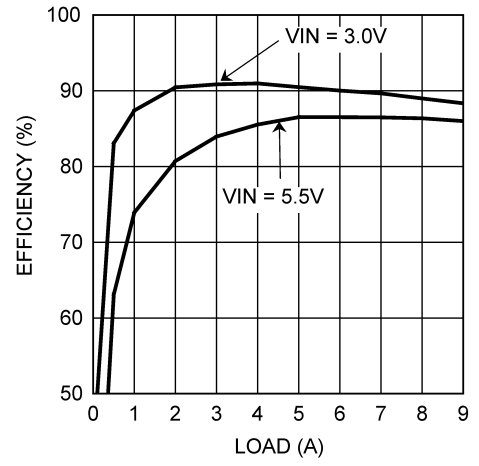
Performance Characteristics

Efficiency



20184401

FIGURE 2. Efficiency vs. Load Current
 $V_{OUT} = 1.2V, f_{sw} = 300\text{ kHz}$

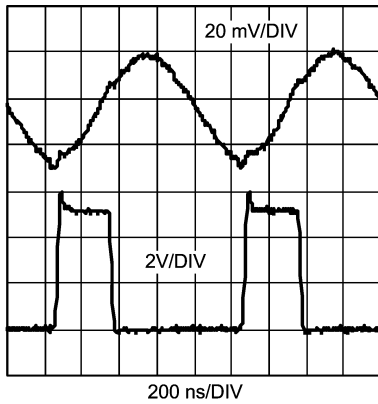


20184402

FIGURE 3. Efficiency vs. Load Current
 $V_{OUT} = 1.5V, f_{sw} = 1\text{MHz}$

Performance Characteristics (Continued)

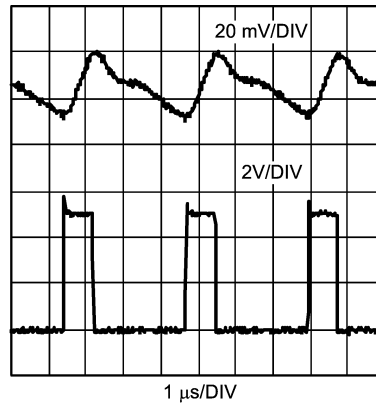
Switch Node Voltage and Output Voltage Ripple



200 ns/DIV

20184403

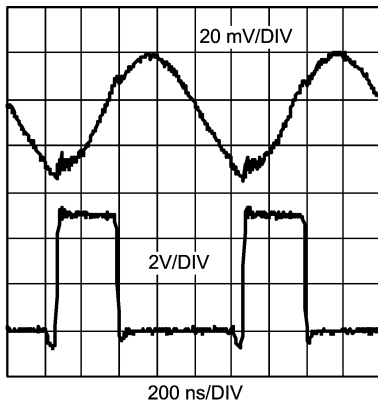
FIGURE 4. $V_{IN} = 5V$, $V_{OUT} = 1.5V$,
 $I_{LOAD} = 0A$, $f_{SW} = 1MHz$
 20 MHz Bandwidth Limit



1 μs/DIV

20184406

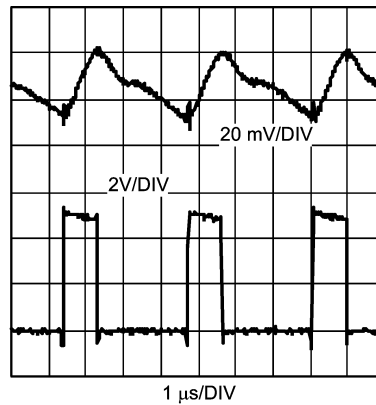
FIGURE 6. $V_{IN} = 5V$, $V_{OUT} = 1.2V$,
 $I_{LOAD} = 0A$, $f_{SW} = 300kHz$
 20 MHz Bandwidth Limit



200 ns/DIV

20184404

FIGURE 5. $V_{IN} = 5V$, $V_{OUT} = 1.5V$,
 $I_{LOAD} = 9A$, $f_{SW} = 1MHz$
 20 MHz Bandwidth Limit



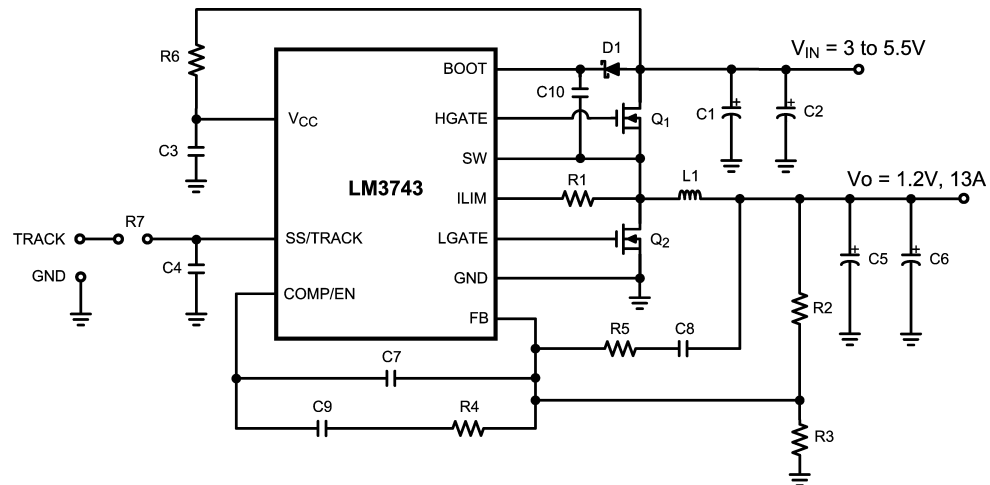
1 μs/DIV

20184408

FIGURE 7. $V_{IN} = 5V$, $V_{OUT} = 1.2V$,
 $I_{LOAD} = 13A$, $f_{SW} = 300kHz$
 20 MHz Bandwidth Limit

TABLE 1. 300 kHz Bill of Material

Designator	Function	Description	Part Number	Vendor
U1	Controller	Buck Controller	LM3743MSOP-10	National Semiconductor
C1	Input Filter	22 μ F, 10V, X7R, 1812	GRM43ER71A226KE01B	Murata
C2	Input Filter	Al-elec, 10V, 470 μ F	10ME470WX	Sanyo
C3	Decoupling	1 μ F, 10V, X7R, 0805	0805ZC105KAT	AVX
C4	Soft Start Cap	180nF, 25V, X7R	VJ0805Y184KXXA	Vishay
C5	Output Filter	470 μ F, 4V, 15m Ω	4TPE470MFL	Sanyo
C6	Output Filter	10 μ F, 6.3V, 0805	0805D106MAT	AVX
C7	Comp Cap	56 pF, 25V, 0805	VJ0805A560KXAA	Vishay
C8	Comp Cap	2.2 nF, 25V, 0805	VJ0805A222KXAA	Vishay
C9	Comp Cap	1.5 nF, 25V, 0805	VJ0805Y152KXXA	Vishay
C10	Bootstrap Cap	.47 μ F, 25V, 0805	VJ0805Y474KXXA	Vishay
R1	Current Limit Res	1.78 k Ω , 0805	CRCW08051781F	Vishay
R2	Top FB Resistor	10 k Ω , 0805	CRCW08051002F	Vishay
R3	Bottom FB Resistor	20 k Ω , 0805	CRCW08052002F	Vishay
R4	Comp Resistor	22.6 k Ω , 0805	CRCW08052262F	Vishay
R5	Comp Resistor	3.57 k Ω , 0805	CRCW08053571F	Vishay
R6	Vcc Filter Resistor	2 Ω , 0805	CRCW08052R00F	Vishay
L1	Output Filter	1.5 μ H, 13.8A, 2.9m Ω	DR125-1R5	Cooper
D1	Bootstrap Diode	500 mA, 20V, $V_F = .3V$	MBR0520LT1	Onsemi
Q1	Top FET	4.5 m Ω @ $V_{GS} = 4.5V$, 21nC	Si7882DP	Vishay
Q2	Bottom FET	4.5 m Ω @ $V_{GS} = 4.5V$, 21nC	Si7882DP	Vishay

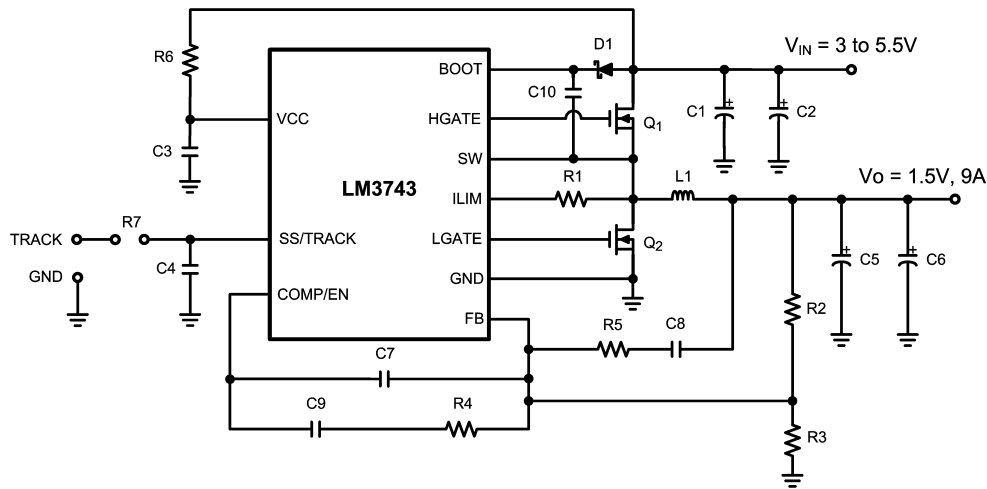


20184412

FIGURE 8. 300 kHz Demo Board Schematic

TABLE 2.

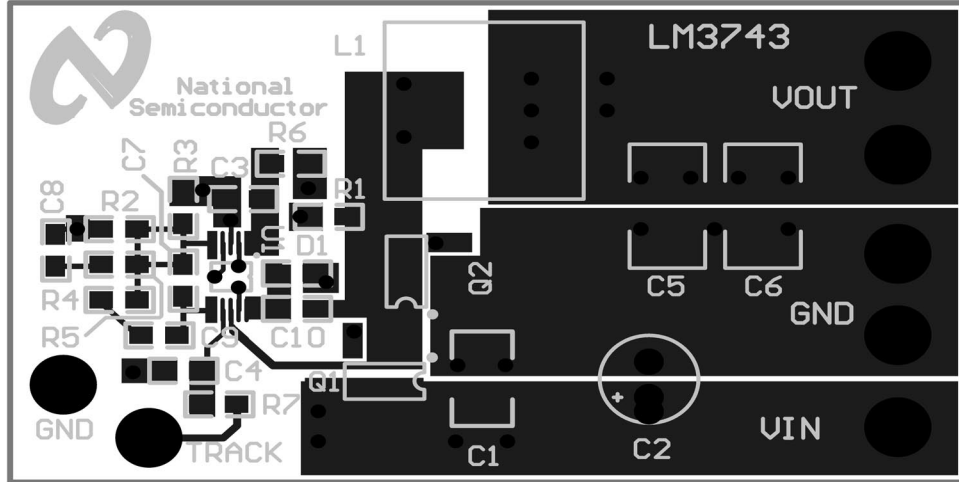
Designator	Function	Description	Part Number	Vendor
U1	Controller	Buck Controller	LM3743MSOP-10	National Semiconductor
C1	Input Filter	22 μ F, 10V, X7R, 1812	GRM43ER71A226KE01B	Murata
C2	Input Filter	Al-elec, 10V, 470 μ F	10ME470WX	Sanyo
C3	Decoupling	1 μ F, 10V, X7R, 0805	0805ZC105KAT	AVX
C4	Soft Start Cap	180 nF, 25V, X7R	VJ0805Y184KXXA	Vishay
C5	Output Filter	470 μ F, 4V, 15m Ω	4TPE470MFL	Sanyo
C6	Output Filter	10 μ F, 6.3V, 0805	0805D106MAT	AVX
C7	Comp Cap	8.2 pF, 25V, 0805	VJ0805A8R2KXAA	Vishay
C8	Comp Cap	820 pF, 25V, 0805	VJ0805A821KXAA	Vishay
C9	Comp Cap	470 pF, 25V, 0805	VJ0805Y471KXXA	Vishay
C10	Bootstrap Cap	.1 μ F, 25V, 0805	VJ0805Y104KXXA	Vishay
R1	Current Limit Res	1.1 k Ω , 0805	CRCW08051101F	Vishay
R2	Top FB Resistor	10 k Ω , 0805	CRCW08051002F	Vishay
R3	Bottom FB Resistor	11.3 k Ω , 0805	CRCW08057871F	Vishay
R4	Comp Resistor	35.7 k Ω , 0805	CRCW08053572F	Vishay
R5	Comp Resistor	8.87 k Ω , 0805	CRCW08058871F	Vishay
R6	Vcc Filter Resistor	2 Ω , 0805	CRCW08052R00F	Vishay
L1	Output Filter	.47 μ H, 11.6A, 3.6m Ω	FP3-R47	Cooper
D1	Bootstrap Diode	500 mA, 20V, $V_F = .3V$	MBR0520LT1	Onsemi
Q1	Top FET	4.5 m Ω @ $V_{GS} = 4.5V$, 21nC	Si7882DP	Vishay
Q2	Bottom FET	4.5 m Ω @ $V_{GS} = 4.5V$, 21nC	Si7882DP	Vishay



20184410

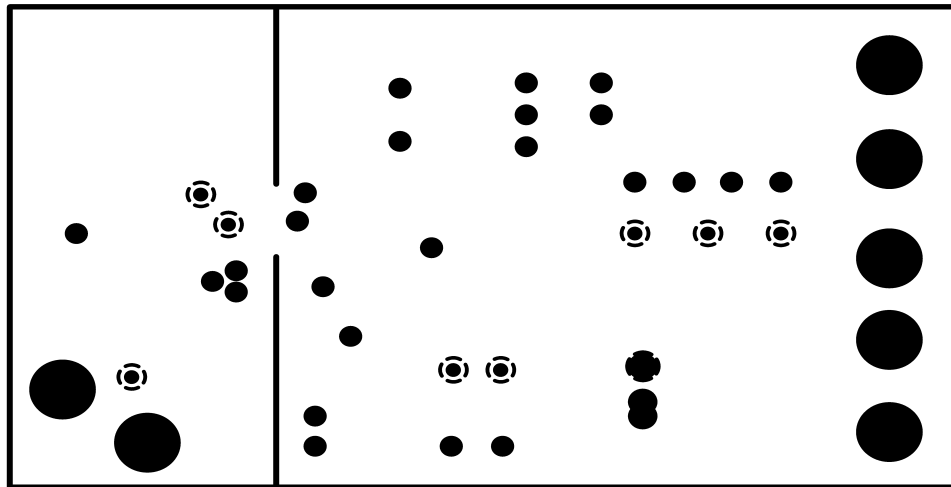
FIGURE 9. 1 MHz Demo Board Schematic

PCB Layout Diagram(s)



20184407

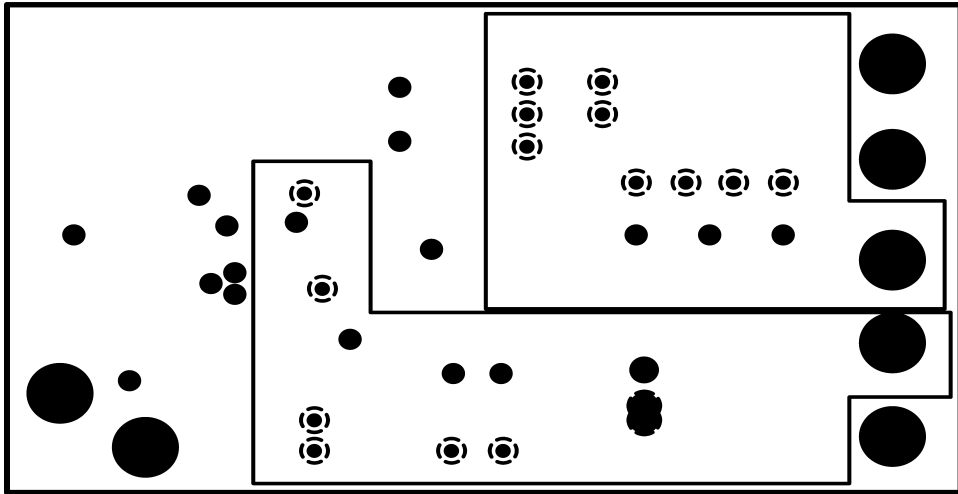
FIGURE 10. Top Layer



20184409

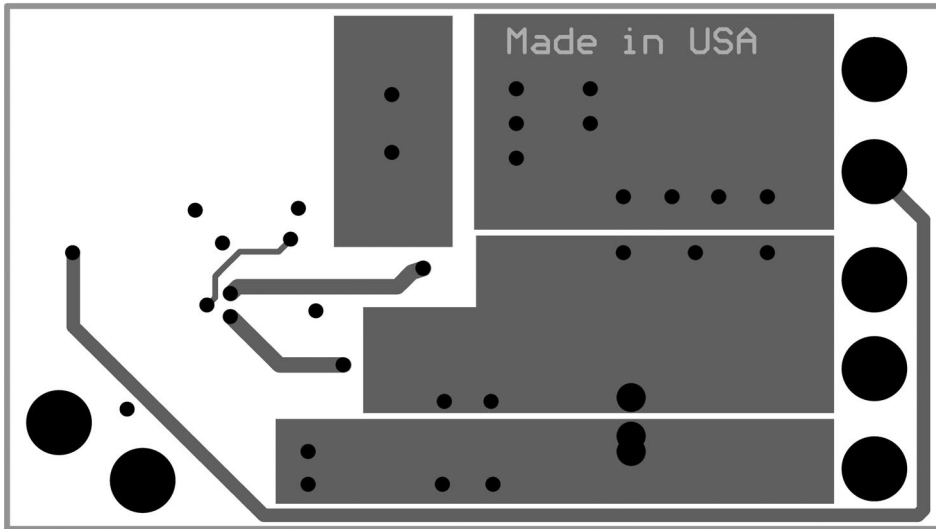
FIGURE 11. Internal Layer I (Ground)

PCB Layout Diagram(s) (Continued)



20184411

FIGURE 12. Internal Layer II (V_{IN} and V_{OUT})
Heat Sinking Layer



20184413

FIGURE 13. Bottom Layer
Heat Sinking Layer & Signal Traces

Notes

National does not assume any responsibility for use of any circuitry described, no circuit patent licenses are implied and National reserves the right at any time without notice to change said circuitry and specifications.

For the most current product information visit us at www.national.com.

LIFE SUPPORT POLICY

NATIONAL'S PRODUCTS ARE NOT AUTHORIZED FOR USE AS CRITICAL COMPONENTS IN LIFE SUPPORT DEVICES OR SYSTEMS WITHOUT THE EXPRESS WRITTEN APPROVAL OF THE PRESIDENT AND GENERAL COUNSEL OF NATIONAL SEMICONDUCTOR CORPORATION. As used herein:

1. Life support devices or systems are devices or systems which, (a) are intended for surgical implant into the body, or (b) support or sustain life, and whose failure to perform when properly used in accordance with instructions for use provided in the labeling, can be reasonably expected to result in a significant injury to the user.
2. A critical component is any component of a life support device or system whose failure to perform can be reasonably expected to cause the failure of the life support device or system, or to affect its safety or effectiveness.

BANNED SUBSTANCE COMPLIANCE

National Semiconductor follows the provisions of the Product Stewardship Guide for Customers (CSP-9-111C2) and Banned Substances and Materials of Interest Specification (CSP-9-111S2) for regulatory environmental compliance. Details may be found at: www.national.com/quality/green.

Lead free products are RoHS compliant.



National Semiconductor
Americas Customer
Support Center
Email: new.feedback@nsc.com
Tel: 1-800-272-9959

www.national.com

National Semiconductor
Europe Customer Support Center
Fax: +49 (0) 180-530 85 86
Email: europa.support@nsc.com
Deutsch Tel: +49 (0) 69 9508 6208
English Tel: +44 (0) 870 24 0 2171
Français Tel: +33 (0) 1 41 91 8790

National Semiconductor
Asia Pacific Customer
Support Center
Email: ap.support@nsc.com

National Semiconductor
Japan Customer Support Center
Fax: 81-3-5639-7507
Email: jpn.feedback@nsc.com
Tel: 81-3-5639-7560